



# Flight Plan & Site Survey

Created using **RPAS Wilco**®

Reference No:	510A8A
Title:	Hub City - Tommy Douglas Collegiate
Pilot Name:	
Pilot Certificate:	
Flight Start:	January 23, 2025 9:06 PM
Flight End:	January 23, 2025 11:06 PM
Flight Area (Latitude):	52° 7' 40.75" N ( 52.128 )
Flight Area (Longitude):	106° 44' 51.99" W ( -106.748 )
Altitude - Radius:	<b>Alt:</b> 400 ft - <b>Rad:</b> 926.0 m ( 0.5 nm)
Classification:	CONTROLLED
FIR - Contact:	CZWG - 204-983-8338

**Notes:**

Your flight is in controlled airspace.

If your RPAS is > 250g, please obtain RPAS Flight Authorization using the NavDrone app or by contacting NavCanada. (CARs 901.71)

Please ensure you received all required authorizations prior to flight.

### Disclaimer

This Site Survey was created using RPAS Wilco by AIM Robotics. The flight plan contained is intended only for RPAS flights on the date/time and location specified. The user accepts all responsibility for the accuracy and completeness of the information contained.

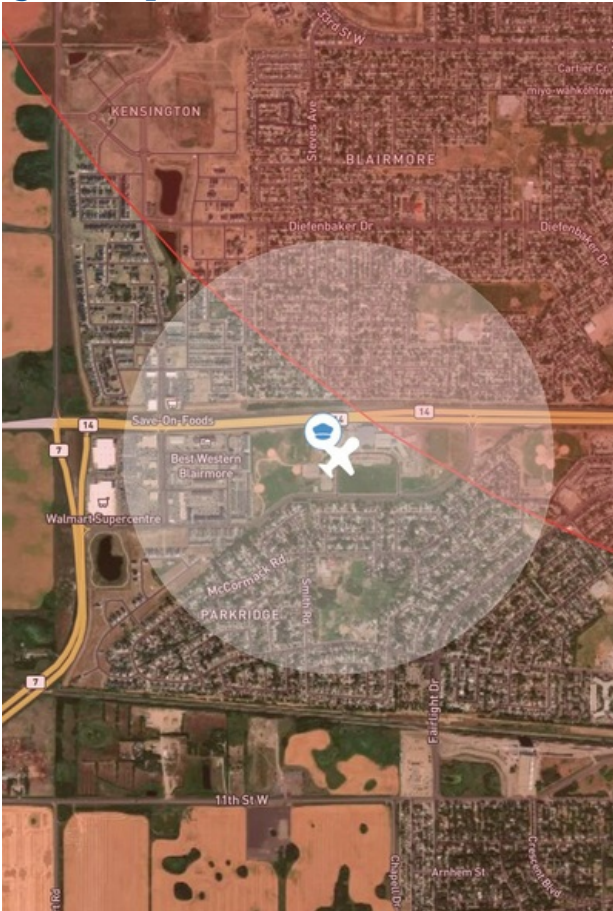
For the complete Terms & Conditions, see

<https://rpswilco.com/#/tnc>

### Included

- Site Survey
- Obstacles (if available)
- Nearby Aerodromes
- Canadian Aviation Regulations
- GFA
- Aerodrome Supplements
  - METAR & TAF (if available)
  - NOTAMs
  - CFS



## Flight Map



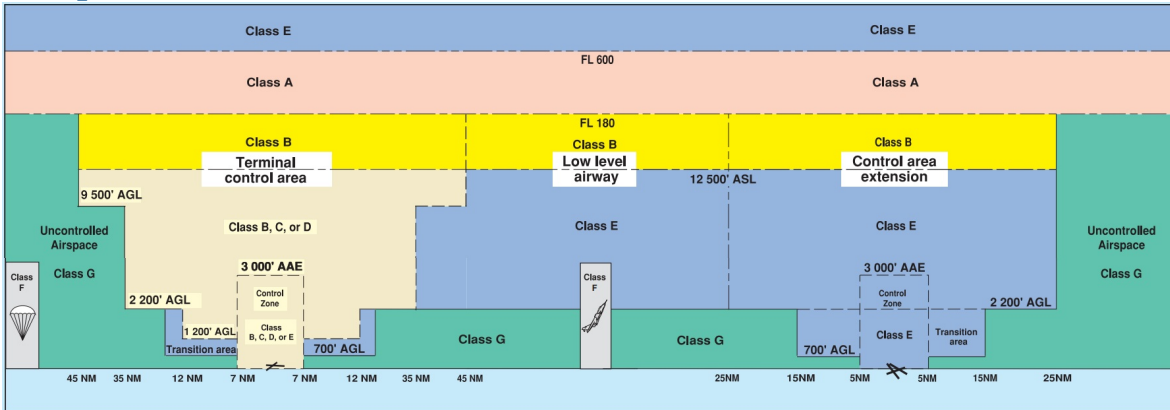
## RPAS Specification

- **Manufacturer:**  
MAAC
- **Model:**  
MODELAIRPLANE
- **Registration Number:**
- **Eligible for advanced operations:**  
No
- **Manufacturer RPAS safety assurance:**
  - **Controlled Airspace:** N/A
  - **Near People:** N/A
  - **Over People:** N/A

## MAP Details

	Latitude	Longitude
 <b>MODEL</b>	52° 7' 40.75" N ( 52.128 )	106° 44' 51.99" W ( -106.748 )
 <b>Pilot</b>	52° 7' 44.35" N ( 52.129 )	106° 44' 55.59" W ( -106.7488 )

## Airspace Classification



## Overlying Airspaces

Class	Name	Floor	Ceiling
E	Saskatoon, SK CAE XPNDR MANDTRY	3900MSL	12500MSL
E	T822 Airway	2200AGL	12500MSL
B	T822 Airway	12500MSL	18000MSL
E	Saskatoon/John G. Diefenbaker Intl, SK TA	700AGL	12500MSL
B	Saskatoon/John G. Diefenbaker Intl, SK TA	12500MSL	18000MSL
E	Saskatoon XPNDR MANDTRY	2900MSL	3900MSL
E	T696 Airway	2200AGL	12500MSL
B	T696 Airway	12500MSL	18000MSL
E	T740 Airway	2200AGL	12500MSL
B	T740 Airway	12500MSL	18000MSL
E	T755 Airway	2200AGL	12500MSL
E	T755 Airway	2200AGL	12500MSL
B	T755 Airway	12500MSL	18000MSL
B	T755 Airway	12500MSL	18000MSL
D	Saskatoon/John G. Diefenbaker Intl CZ	SFC	5000MSL
B	Saskatoon, SK CAE XPNDR MANDTRY	12500MSL	18000MSL

## Nearest Aerodromes & Distance from Operation

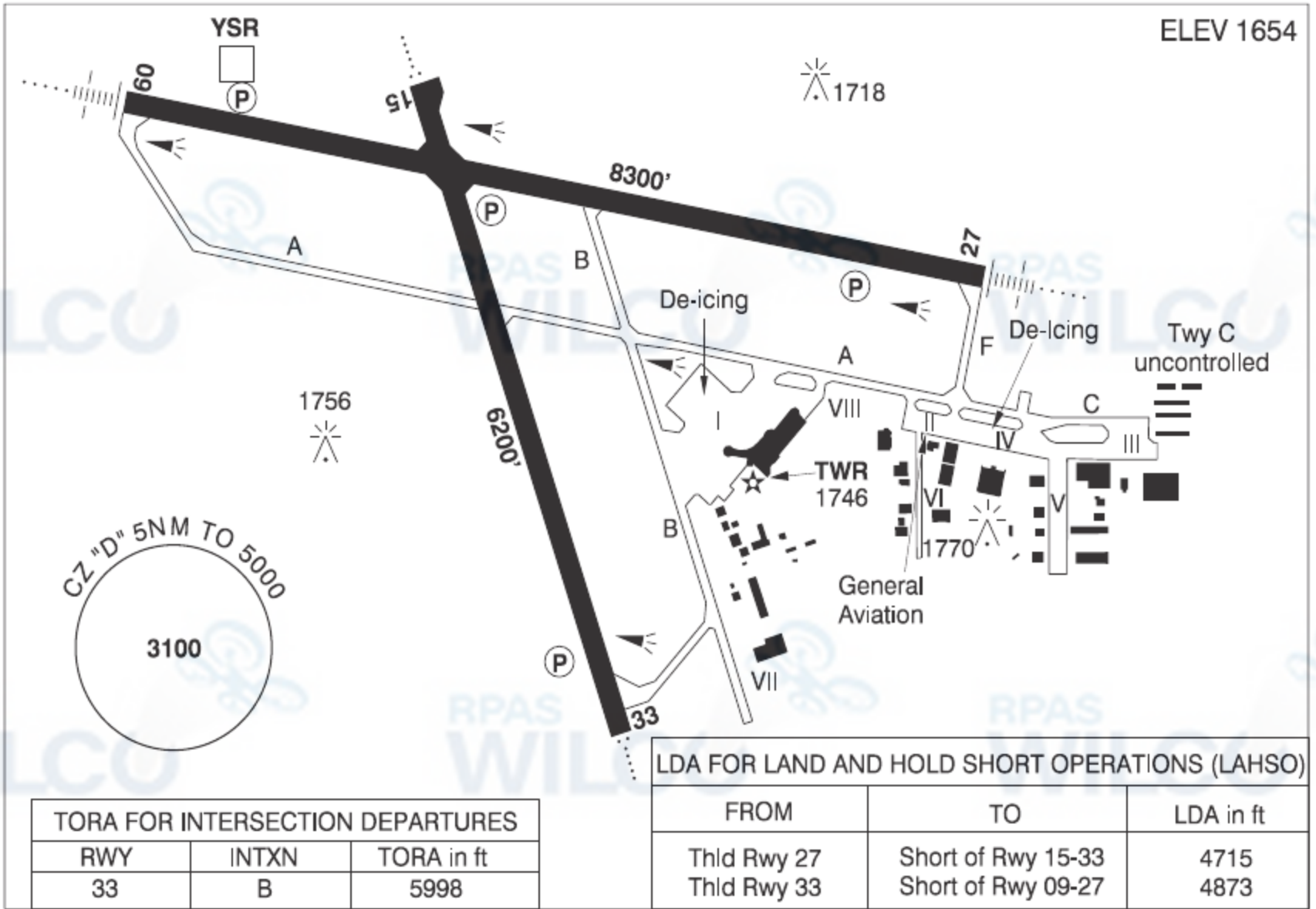
JOHN G. DIEFENBAKER INTL (CYXE - AERODROME - Cert)	Lat: 52.171	Long: -106.7	5.788KM	3.13NM	NE
SASKATOON (JIM PATTISON CHILDREN'S HOSPITAL) (CJP4 - HELIPORT - Cert)	Lat: 52.132	Long: -106.643	7.166KM	3.87NM	E
RICHTER FIELD (CRF5 - AERODROME - Reg)	Lat: 52.28	Long: -106.684	17.453KM	9.42NM	N
BANGA AIR (CJN5 - AERODROME - Reg)	Lat: 52.001	Long: -106.463	24.049KM	12.99NM	SE

**SASKATCHEWAN**

**AERODROME/FACILITY DIRECTORY**

**SASKATOON / JOHN G. DIEFENBAKER INTL SK**

**CYXE**



<b>REF</b>	N52 10 15 W106 42 00 3NW 11°E (2013) UTC-6 Elev 1654' A5006 A5015 LO2 HI3 T1 CAP
<b>OPR</b>	Saskatoon Aprt Authority 306-975-4013 H24 Cert
<b>PF</b>	A-1,2,3,6,7 avbl 1230-0630Z C-4,5
<b>CUST</b>	AOE/200 (300 with staged off-loading) 888-226-7277 14-06Z May 6-Nov 5, 14-06Z Nov 6-Dec 3 O/T O/R, H24 Dec 4-May 5
<b>FLT PLN</b>	
<b>FIG</b>	Edmonton 866-WXBRIEF (Toll free within Canada) or 866-541-4102 (Toll free within Canada & USA)
<b>WX</b>	METAR H24. TAF H24, issue times: 00, 06, 12, 18Z.
<b>DUAT</b>	Saskatoon Aerocentre.
<b>SERVICES</b>	Call out chg may be levied for one or more svcs.
<b>FUEL</b>	100LL, JA-1
<b>OIL</b>	All
<b>S</b>	1,2,3,4,5,6
<b>ARFF</b>	DESIGNATED CAT 6 (CAT 7 30 min PN). Discrete emerg freq 122.675
<b>SUP FL</b>	LHOX D & A-ice
<b>JASU</b>	CE16
<b>PVT ADV</b>	Kreos Aviation/Shell 122.95 12-04Z; Lockhart Aviation/World Fuel 122.85 12-04Z
<b>MIL CON</b>	Depmar Flight Holdings Inc (Shell) 306-931-8552

## SASKATCHEWAN

## AERODROME/FACILITY DIRECTORY

## SASKATOON / JOHN G. DIEFENBAKER INTL SK (Cont'd)

CYXE

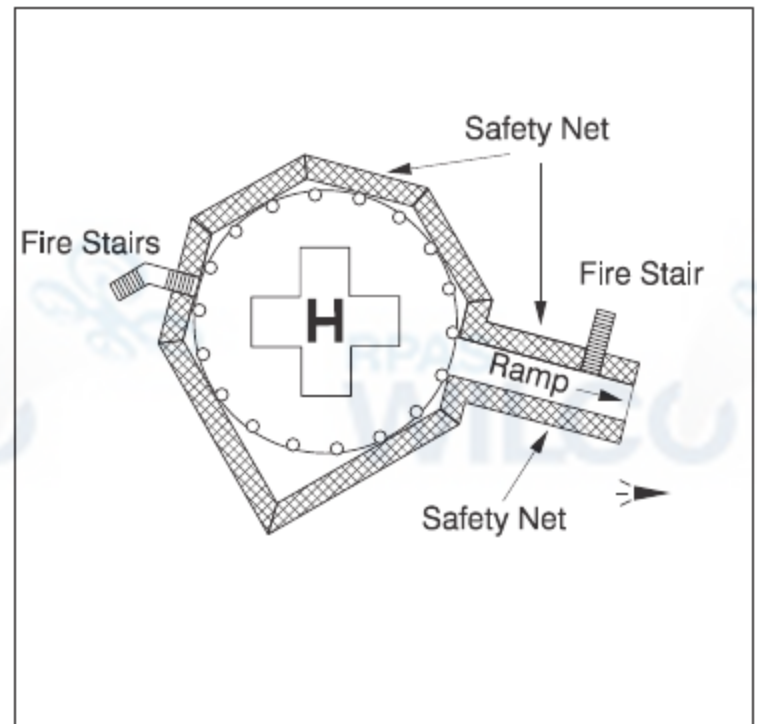
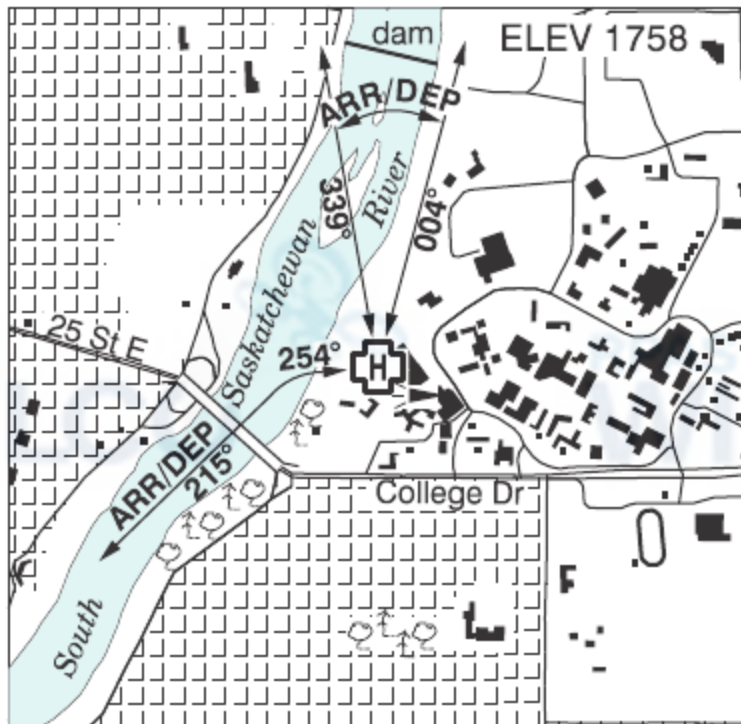
<b>RWY DATA</b>	Rwy 09(090°)/27(270°) 8300x148 ASPH Rwy 15(150°)/33(330°) 6200x148 ASPH RESA: All Rwys 492'
<b>RWY CERT</b>	Rwy 09 RVR 1200(1/4sm)/Rwy 27 RVR 1200(1/4sm) AGN IIIB Rwy 15 RVR 1200(1/4sm)/Rwy 33 RVR 1200(1/4sm) AGN IIIB
<b>TWY</b>	Twy A and Twy C discretionary oversteer reqrd for all acft at intxn of Twy A and Apron II, intxn of Twy A/C and Apron IV, intxn of Twy C and Apron III. Twy C uncontrolled. Twy B adj to Apron I uncontrolled. A310, A330, B757 & B767: 120° turns at intxn Twy B & A proh.
<b>APRON</b>	Prkg Apron I rstd to scheduled & non-scheduled airline tfc. 2 hr PN for gate assignment on Apron I, ctc opr. All other itinerant acft must park on Apron II. Apron VIII rstd to scheduled & non-scheduled airline tfc. 2 hr PN for gate assignment on Apron VIII, ctc opr. No taxiing btwn Apron I and Apron VIII. Apron I, VI, VIII: Heli ops proh. Apron V: Max heli wt 2500lbs.
<b>RCR</b>	Opr or 306-975-4328 CRFI, PLR/PCN
<b>LIGHTING</b>	09-AN(TE HI) P3, 27-AN(TE HI) P3, 15-AO(TE HI) P2, 33-AO(TE HI) P2. Nominal touchdown pt P2 Rwy 15 aprx 1200' S of thld Rwy 15.
<b>COMM</b>	
<b>RADIO</b>	Saskatoon 118.3 PTC avbl (E) 0445-1200Z Mon-Fri Mar 09-Oct 31, 0445-1245Z Sat-Sun Mar 09-Oct 31, 0445-1245Z Nov 1- Mar 8 (emerg only 306-665-4249)
<b>RCO</b>	Edmonton rdo 122.375 (FISE) 126.7 (bcst)
<b>ATIS</b>	128.4
<b>GND</b>	Saskatoon 121.9 1200-0445Z Mon-Fri Mar 09-Oct 31, 1245-0445Z Sat-Sun Mar 09-Oct 31, 1245-0445Z Nov 1- Mar 8
<b>TWR</b>	Saskatoon 118.3 (E) 1200-0445Z Mon-Fri Mar 09-Oct 31, 1245-0445Z Sat-Sun Mar 09-Oct 31, 1245-0445Z Nov 1- Mar 8 (emerg only 306-665-4249)
<b>MF</b>	rdo 118.3 0445-1200Z Mon-Fri Mar 09-Oct 31, 0445-1245Z Sat-Sun Mar 09-Oct 31, 0445-1245Z Nov 1- Mar 8 5NM 5000 ASL (CAR 602.98)
<b>ARR</b>	Winnipeg Ctr 119.9
<b>DEP</b>	Winnipeg Ctr 119.9
<b>PAL</b>	Winnipeg Ctr 134.325
<b>NAV</b>	
<b>DME</b>	SASKATOON YSR 114.7 Ch 94 N52 10 45 W106 42 49 (1673')
<b>ILS</b>	IST 109.9 (Rwy 09) RVR LOC reliable only within 10° either side of centreline.
<b>PRO</b>	Rgt hand circuits Rwys 15 & 27 (CAR 602.96). Arr/dep as depicted on VTPC to/fr CYA 306T. Reduced Visibility Procedures (RVR less than 2600 to 1200 ft): See CAP <b>ATS PPR REQUIREMENTS:</b> Ctc Winnipeg ACC 204-984-5979 for the following; - IFR tng and photo survey within Saskatoon Class E Transponder Airspace <b>HELI PRO:</b> Aprons II, III, IV and V - heli tkof/ldg not auth. Ground and hover taxi only.
<b>CAUTION</b>	Random radiosonde &/or heavy balloon launches aprx 15 NM SW, at abandoned A/D Vanscoy. Ocsl parajump activity within 1NM of Martensville (N52 16 50 W106 41 08, 6.6NM N aprt), daylight hrs activated by NOTAM. Max alt 11,600 ASL.

## SASKATCHEWAN

## AERODROME/FACILITY DIRECTORY

## SASKATOON (JIM PATTISON CHILDREN'S HOSPITAL) SK (Heli)

CJP4



<b>REF</b>	N52 07 55 W106 38 33 Adj E 11°E (2013) UTC-6 Elev 1758' A5006 A5015
<b>OPR</b>	Saskatchewan Health Authority 306-655-0683 Cert PPR
<b>PF</b>	A-1,2,4,7,8 C-3,5,6
<b>FLT PLN</b>	
<b>FIG</b>	Edmonton 866-WXBRIEF (Toll free within Canada) or 866-541-4102 (Toll free within Canada & USA)
<b>HELI DATA</b>	FATO 86' dia non-supporting TLOF 57' dia CONC Safety Area 115' dia 17,000 lbs Max heli overall length 57.4'
<b>RCR</b>	Support services 306-844-1601
<b>LIGHTING</b>	RY (LO) yellow LED
<b>COMM</b>	
<b>RADIO</b>	Saskatoon 118.3 PTC avbl (E) 0445-1200Z Mon-Fri Mar 09-Oct 31, 0445-1245Z Sat-Sun Mar 09-Oct 31, 0445-1245Z Nov 1-Mar 8 (emerg only 306-665-4249)
<b>RCO</b>	Edmonton rdo 122.375 (FISE) 126.7 (bcst)
<b>TWR</b>	Saskatoon 118.3 (E) 1200-0445Z Mon-Fri Mar 09-Oct 31, 1245-0445Z Sat-Sun Mar 09-Oct 31, 1245-0445Z Nov 1-Mar 8 (emerg only 306-665-4249)
<b>MF</b>	rdo 118.3 0445-1200Z Mon-Fri Mar 09-Oct 31, 0445-1245Z Sat-Sun Mar 09-Oct 31, 0445-1245Z Nov 1-Mar 8 5NM centred on Saskatoon/John G. Diefenbaker Intl A/D 3.2NM NW 5000 ASL (CAR 602.98)
<b>PRO</b>	Arr/dep 339° to 004° fr heli, slope 8% (H3), day/night use. Arr/dep 254° to 215° curved fr heli, slope 8% (H3), day/night use.
<b>CAUTION</b>	Lgtd hosp elevator penthouse aprx 69' W of heli. Lgtd hosp signage on the N bldg wall BLW heli elev.

## SASKATCHEWAN

## AERODROME/FACILITY DIRECTORY

## SASKATOON / RICHTER FIELD SK

CRF5

<b>REF</b>	N52 16 49 W106 41 02 6N 11°E (2013) UTC-6 Elev 1700' A5006 A5015	
<b>OPR</b>	Frank Richter 306-384-3975 Reg PPR	
<b>FLT PLN</b>	<b>FIC</b> Edmonton 866-WXBRIEF (Toll free within Canada) or 866-541-4102 (Toll free within Canada & USA)	
<b>PF</b>	C-1,2,4,5	
<b>SERVICES</b>	<b>FUEL</b> 100LL <b>S</b> 1,4,5	
<b>RWY DATA</b>	Rwy 08(079°)/26(259°) 3000x75 GRASS/GRVL/CLAY, Rwy 08 100x25 CONC pad at thld <b>RCR</b> Opr Ltd win maint	
<b>COMM</b>	<b>ATF</b> tfc 123.2 5NM 4700 ASL excluding portion within CYXE CZ	
<b>PRO</b>	Rgt hand circuits Rwy 08 (CAR 602.96)	

**SASKATCHEWAN**

**AERODROME/FACILITY DIRECTORY**

**SASKATOON / BANGA AIR SK**

**CJN5**

<b>REF</b>	N52 00 02 W106 27 45 10SE 11°E (2012) UTC-6 Elev 1690' A5006 A5015		<b>ELEV</b> 1690
<b>OPR</b>	Banga International Air Ltd 306-612-1227 Reg PPR		
<b>PF</b>	C-1,2,5 D-3,4,6		
<b>FLT PLN</b>	<b>FIC</b> Edmonton 866-WXBRIEF (Toll free within Canada) or 866-541-4102 (Toll free within Canada & USA)		
<b>RWY DATA</b>	Rwy 09(093°)/27(273°) 2600x70 earth Thld 27 displ 200' <b>RCR</b> Opr No win maint		
<b>COMM</b>	<b>ATF</b> tfc 122.8 5NM 4700 ASL		
<b>PRO</b>	Circuit hgt 2400 ASL. Aprt in close proximity to Saskatoon Class E airspace, see VNC. For flt info ctc TWR 118.3.		
<b>CAUTION</b>	Extv ultra-light & NORDO acft in vic		



# Canadian Aviation Regulations

## Division III — General Operating and Flight Rules

For full listing please visit : <https://laws-lois.justice.gc.ca/eng/regulations/SOR-96-433/FullText.html#s-901.27>

### Visual Line-of-sight

- **901.11 (1)** Subject to subsection (2), no pilot shall operate a remotely piloted aircraft system unless the pilot or a visual observer has the aircraft in visual line-of-sight at all times during flight.
- **(2)** A pilot may operate a remotely piloted aircraft system without the pilot or a visual observer having the aircraft in visual line-of-sight if the operation is conducted in accordance with a special flight operations certificate — RPAS issued under section 903.03.

### Procedures

- **901.23 (1)** No pilot shall operate a remotely piloted aircraft system unless the following procedures are established:
  - **(a)** normal operating procedures, including pre-flight, take-off, launch, approach, landing and recovery procedures; and
  - **(b)** emergency procedures, including with respect to
    - **(i)** a control station failure,
    - **(ii)** an equipment failure,
    - **(iii)** a failure of the remotely piloted aircraft,
    - **(iv)** a loss of the command and control link,
    - **(v)** a fly-away, and
    - **(vi)** flight termination.
- **(2)** If the manufacturer of the remotely piloted aircraft system provides instructions with respect to the topics referred to in paragraphs (1)(a) and (b), the procedures established under subsection (1) shall reflect those instructions.
- **(3)** No pilot shall conduct the take-off or launch of a remotely piloted aircraft unless the procedures referred to in subsection (1) are reviewed before the flight by, and are immediately available to, each crew member.
- **(4)** No pilot shall operate a remotely piloted aircraft system unless the operation is conducted in accordance with the procedures referred to in subsection (1).

### Site Survey

**901.27** No pilot shall operate a remotely piloted aircraft system unless, before commencing operations, they determine that the site for take-off, launch, landing or recovery is suitable for the proposed operation by conducting a site survey that takes into account the following factors:

- **(a)** the boundaries of the area of operation;
- **(b)** the type of airspace and the applicable regulatory requirements;
- **(c)** the altitudes and routes to be used on the approach to and departure from the area of operation;
- **(d)** the proximity of manned aircraft operations;
- **(e)** the proximity of aerodromes, airports and heliports;
- **(f)** the location and height of obstacles, including wires, masts, buildings, cell phone towers and wind turbines;
- **(g)** the predominant weather and environmental conditions for the area of operation; and
- **(h)** the horizontal distances from persons not involved in the operation.

### Operations at or in the Vicinity of an Aerodrome, Airport or Heliport

- **901.47 (1)** No pilot shall operate a remotely piloted aircraft at or near an aerodrome that is listed in the *Canada Flight Supplement* or the *Water Aerodrome Supplement* in a manner that could interfere with an aircraft operating in the established traffic pattern.
- **(2)** Subject to section 901.73, no pilot shall operate a remotely piloted aircraft at a distance of less than
  - **(a)** three nautical miles from the centre of an airport; and
  - **(b)** one nautical mile from the centre of a heliport.
- **(3)** No pilot shall operate a remotely piloted aircraft at a distance of less than three nautical miles from the centre of an aerodrome operated under the authority of the Minister of National Defence unless the operation is conducted in accordance with a special flight operations certificate — RPAS issued under section 903.03.

### Records

- **901.48 (1)** Every owner of a remotely piloted aircraft system shall keep the following records:
  - **(a)** a record containing the names of the pilots and other crew members who are involved in each flight and, in respect of the system, the time of each flight or series of flights; and
  - **(b)** a record containing the particulars of any mandatory action and any other maintenance action, modification or repair performed on the system, including
    - **(i)** the names of the persons who performed them,
    - **(ii)** the dates they were undertaken,
    - **(iii)** in the case of a modification, the manufacturer, model and a description of the part or equipment installed to modify the system, and
    - **(iv)** if applicable, any instructions provided to complete the work.
- **(2)** Every owner of a remotely piloted aircraft system shall ensure that the records referred to in subsection (1) are made available to the Minister on request and are retained for a period of
  - **(a)** in the case of the records referred to in paragraph (1)(a), 12 months after the day on which they are created; and
  - **(b)** in the case of the records referred to in paragraph (1)(b), 24 months after the day on which they are created.
- **(3)** Every owner of a remotely piloted aircraft system who transfers ownership of the system to another person shall, at the time of transfer, also deliver to that person all of the records referred to in paragraph (1)(b).